

**workagile**  
MAKING SPACES AGILE



**BusyPod**

[work-agile.com](http://work-agile.com)



# Making spaces agile

Workkagile design and manufacture flexible furniture solutions that enable companies to adapt and flex as business needs change. We believe that a truly agile workspace will always provide choice, and Workkagile furniture designs will do exactly that to any workspace.

Today's hybrid focused workspaces show a growing need for adaptability, and Workkagile furniture solutions support this shift, encouraging productivity through enabling better collaboration, communication and creativity.

With a focus on modular and creative designs that are inherently sustainable through the option to re-configure and re-use, either within the existing area or in a completely new workspace, Workkagile solutions will truly save you time, money and effort!

Agile working is all about creating a space that provides choice

## Instant quiet, privacy and focus

BusyPods are designed to minimise the negative effects of unwanted noise, providing a tranquil place of quiet and privacy.

With up to 38dB of sound reduction, these versatile pods can instantly provide a space for private conversations, video calls or simply create additional desk/meeting spaces.



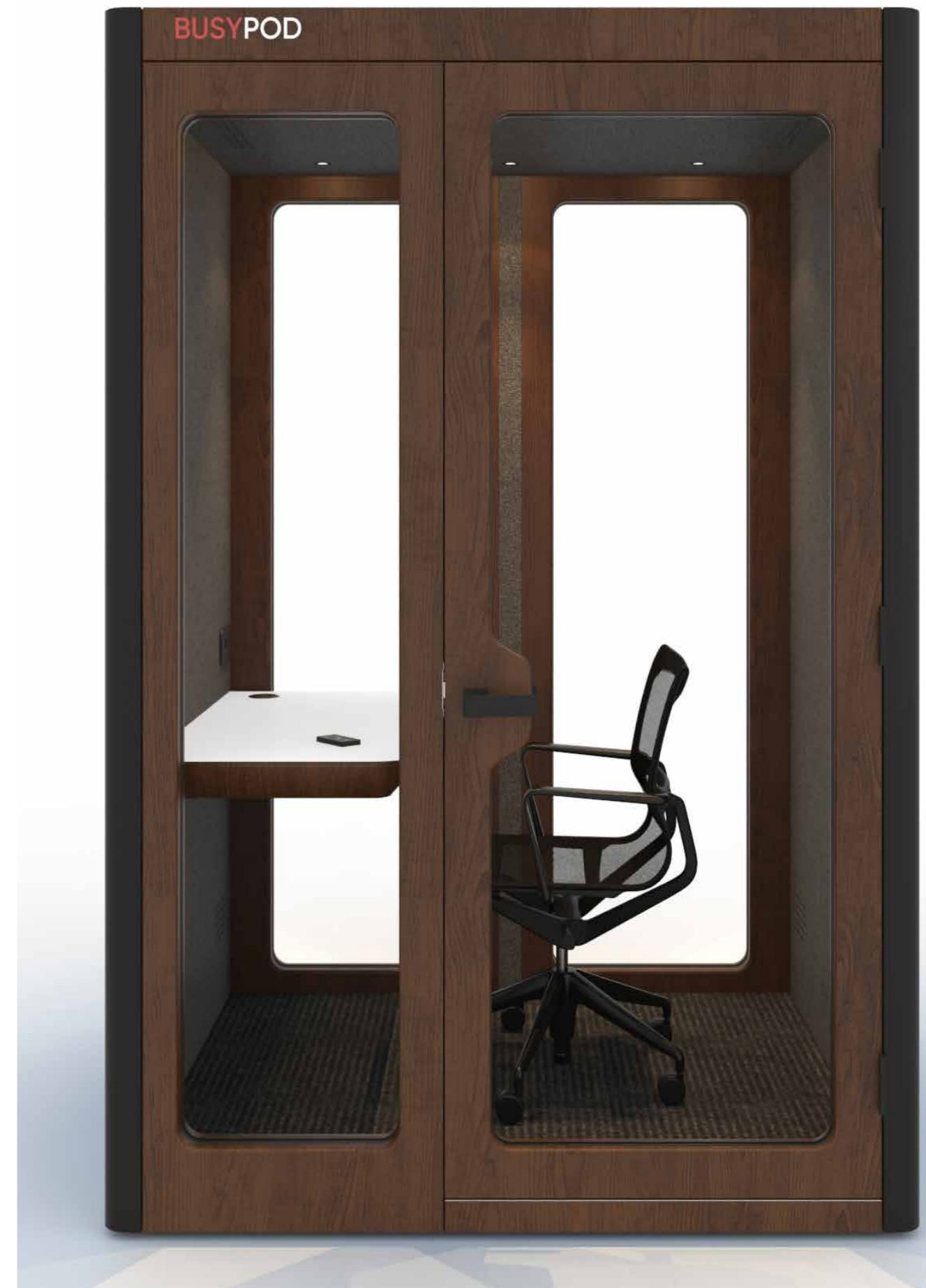
# Naturally beautiful meeting pods

## Real wood veneer

BusyPods come standard with multiple real wood veneer options for the front and back of the pods.

Combined with contrasting sheet metal sides, this creates a stunning natural design aesthetic, which is sure to be the centerpiece in any office design.

Pods are also available lacquered in any RAL colour, allowing you to match the pod with your brand colours.



True peace and quiet  
when you need it

## Quality soundproofing

BusyPods come with innovative double seal technology and double layer glass, giving you the ultimate soundproof experience and blocking out almost all unwanted noise.

With sound reduction ratings of between 35-38dB, take advantage of true peace and quiet when you need to focus, or the privacy you require to have that important conversation or take that private call.



# Comfortable & energy efficient

## Sensor activated lighting and ventilation

BusyPods have integrated sensor activated ventilation and lighting as standard, so you never need to worry about wasting energy by accidentally leaving them on.

Efficient ventilation system with the air being replaced approximately every 40-80 seconds depending on booth size, giving a fresher working space.

Low power consumption with 1 watt LED ceiling lights, which create a comfortable atmosphere.



Easy to see if  
**someone's home**

## BusyPod occupation light

Each BusyPod has an inbuilt occupation light, which stays lit when the pod is in used, as it is linked to the internal PIR sensor.

This allows you to easily see if the pod is in use, without having to approach and look in through the glass front, saving users from getting disturbed.



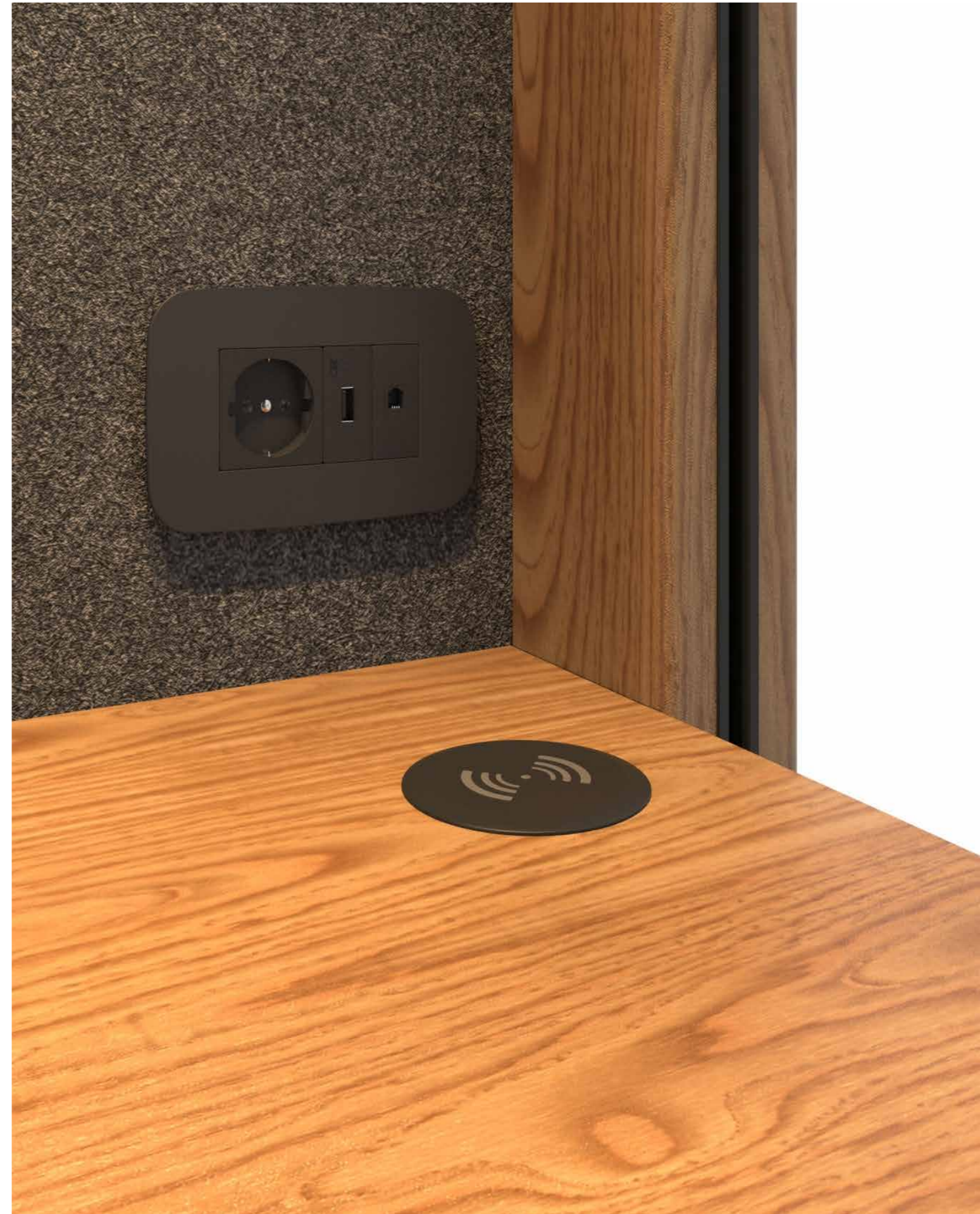
# Ready to go with powered up workstation

## Integrated desk and power

BusyPods come standard with integrated power, including a UK 3 pin socket and USB charging port, allowing you to charge your laptop and phone simultaneously.

Wireless charging pad and data port also available as optional extras, allowing you to have a wired network connection while inside the pod.

Desks come as standard with BusyPods, meaning that once installed the pods are work-ready.







# BusyPod features & benefits

## EXCEPTIONAL SOUNDPROOFING

35-38Db sound insulation giving far superior level of privacy achieved through a real latched door with double-seal technology.

## BEAUTIFUL, NATURAL FINISHES

Soft wood tones and contrasting metal sides offer a unique aesthetic unlike many basic or corporate looking designs matching the unique aesthetic often required.

## PREMIUM QUALITY BUILD

Premium materials used, sustainable and re-usable ensuring a sustainable and longer lifespan.

## FAST AND QUIET VENTILATION

Air replaced every 40-60 seconds giving a fresher working space.

## FAST INSTALLATION

Our Phone and Meeting pods can be installed in only 1-3 hours with minimal disruption to the office. The optimal solution for retro-fitting meeting spaces in a busy office!

## PLUG AND PLAY

Everything is powered from a 3 pin plug, BusyPod is super simple to get up and going in minutes. Simply plug into a standard wall socket and you have a fully functional meeting pod.

## POWER AND USB PORT

All our pods come with UK Power and USB port as standard so you always have access to power up your laptops or phones.

## DDA COMPLIANT

BusyPod Phone Booth Plus, Medium Work, Large and XL are all available with an optional, foldable ramp to make them accessible for people in wheelchairs.

## FIRE WARNING SYSTEM

The Fire Warning System for BUSYPODs includes a red warning light under the table, a sprinkler head, and a connection to the building's fire alarm and sprinkler system, ensuring compliance and safety.

## SUSTAINABLE AND ENERGY EFFICIENT

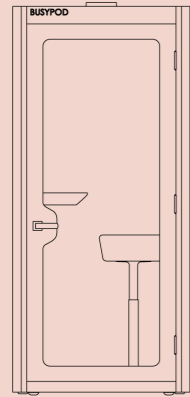
All our pods come with sensor activated lighting and ventilation, so you never need to worry about leaving the lights on. The build materials used are fully FSC certified and are 90% recyclable.

## CUSTOMISABLE OPTIONS

7 exterior colour options & 3 real wood frame options as standard so you can tailor to your design or brand. Any RAL colour is also available as a special on request.

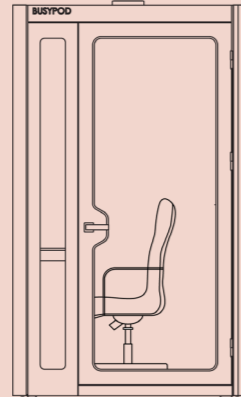


# BusyPod options



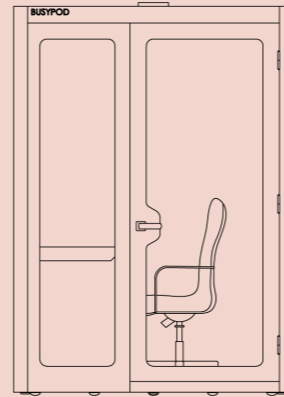
## PHONE BOOTH

Width: 1020mm  
Depth: 1020mm  
Height: 2263mm



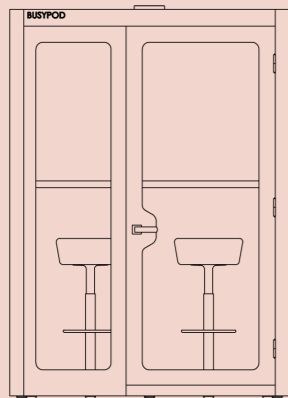
## PHONE BOOTH PLUS

Width: 1320mm  
Depth: 1020mm  
Height: 2263mm



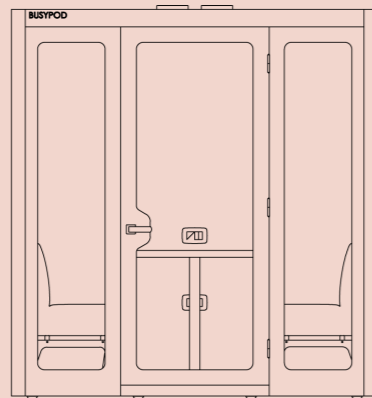
## MEDIUM WORK (1 PERSON)

Width: 1607mm  
Depth: 1300mm  
Height: 2263mm



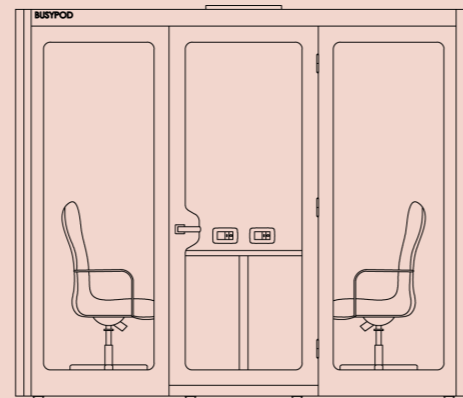
## MEDIUM MEET (2 PERSON)

Width: 1607mm  
Depth: 1300mm  
Height: 2263mm



## LARGE (2-4 PERSON)

Width: 2107mm  
Depth: 1300mm  
Height: 2263mm



## EXTRA LARGE (4-6 PERSON)

Width: 2623mm  
Depth: 2800mm  
Height: 2263mm



# BusyPod Phone Booth

No need to stand out in the corridor or stairwell to make that phone call. Our Phone Booths are soundproofed, comfortable spaces that come with a built-in desk as standard. The BusyPod Phone Booth is the solution you need to regain lost privacy in your open-plan office!



## PHONE BOOTH

### EXTERIOR

Width: 1020mm  
Depth: 1020mm  
Height: 2263mm

### INTERIOR

Width: 902mm  
Depth: 870mm  
Height: 2027mm

### DESK

Height: 1062mm

**WEIGHT:** 370kg

**DB RATING:** up to 35dB

**INSTALL TIME:** under 1 hour

**CEILING CLEARANCE:** 250-300mm

### STANDARD FEATURES

- LED lighting
- BusyPod occupation light
- Integrated power and USB port
- Air ventilation system
- PIR movement sensor
- Commercial grade carpet
- Stainless steel door baseplate
- Double seal door technology
- Interior acoustic PET felt panels
- Natural real wood veneer frame
- Fixed perch-height desk

+44 (0)20 3904 6688



### OPTIONAL FEATURES

- Coat hanger in matching veneer
- Integrated data port
- Switch privacy glass
- Automatic door closer
- Touch control panel
- Wireless charger within desk
- Solid back instead of glass
- Fire warning and sprinkler system
- Additional socket for screen
- Manifestations and exterior signage
- Height adjustable stool

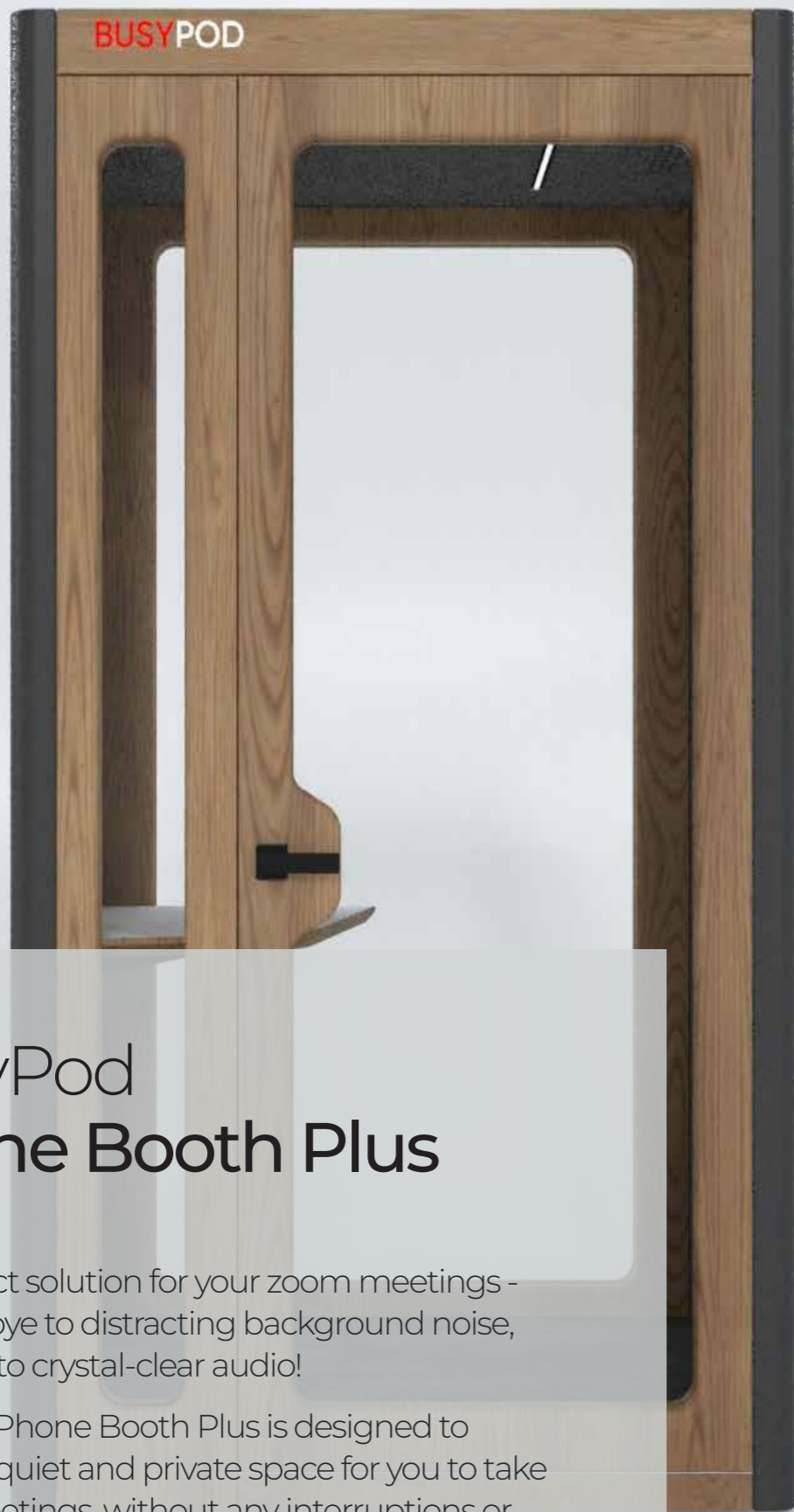
[london@work-agile.com](mailto:london@work-agile.com)

[work-agile.com](http://work-agile.com)

# BusyPod Phone Booth Plus

The perfect solution for your zoom meetings - say goodbye to distracting background noise, and hello to crystal-clear audio!

BusyPod Phone Booth Plus is designed to provide a quiet and private space for you to take virtual meetings, without any interruptions or distractions.



## PHONE BOOTH PLUS

### EXTERIOR

Width: 1320mm  
Depth: 1020mm  
Height: 2263mm

### INTERIOR

Width: 1200mm  
Depth: 880mm  
Height: 2027mm

### DESK

Height: 750mm

**WEIGHT:** 440kg

**DB RATING:** up to 38.2dB

**INSTALL TIME:** under 1.5 hours

**CEILING CLEARANCE:** 250-300mm

### STANDARD FEATURES

- LED lighting
- BusyPod occupation light
- Integrated power and USB port
- Air ventilation system
- PIR movement sensor
- Commercial grade carpet
- Stainless steel door baseplate
- Double seal door technology
- Interior acoustic PET felt panels
- Natural real wood veneer frame
- Fixed work desk

**+44 (0)20 3904 6688**

**[london@work-agile.com](mailto:london@work-agile.com)**

**[work-agile.com](http://work-agile.com)**



### OPTIONAL FEATURES

- Coat hanger in matching veneer
- Integrated data port
- Switch privacy glass
- Folding access ramp
- Automatic door closer
- Touch control panel
- Wireless charger within desk
- Solid back instead of glass
- Fire warning and sprinkler system
- Additional socket for screen
- Manifestations and exterior signage
- Height adjustable desk
- Integrated bench seat



## BusyPod Medium Work

Over 50% of people in open plan offices expressed significant levels of dissatisfaction with 'sound privacy'. (Kim J, Dear R. 2013).

With a built-in work desk included, the BusyPod Medium Work is an easy way to add additional private work stations to any office.

### MEDIUM WORK (1 PERSON)

#### EXTERIOR

Width: 1607mm  
Depth: 1300mm  
Height: 2263mm

#### INTERIOR

Width: 1490mm  
Depth: 1141mm  
Height: 2027mm

#### DESK

Height: 750mm

**WEIGHT:** 560kg

**DB RATING:** up to 38.2dB

**INSTALL TIME:** under 12 hours

**CEILING CLEARANCE:** 250-300mm

#### STANDARD FEATURES

- LED lighting
- BusyPod occupation light
- Integrated power and USB port
- Air ventilation system
- PIR movement sensor
- Commercial grade carpet
- Stainless steel door baseplate
- Double seal door technology
- Interior acoustic PET felt panels
- Natural real wood veneer frame
- Fixed work desk



#### OPTIONAL FEATURES

- Coat hanger in matching veneer
- Integrated data port
- Switch privacy glass
- Folding access ramp
- Automatic door closer
- Touch control panel
- Wireless charger within desk
- Solid back instead of glass
- Fire warning and sprinkler system
- Additional socket for screen
- Manifestations and exterior signage
- Height adjustable desk
- Integrated bench seat

+44 (0)20 3904 6688

[london@work-agile.com](mailto:london@work-agile.com)

[work-agile.com](http://work-agile.com)



## BusyPod Medium Meet

The BusyPod Medium Meet is a cost effective and easy way to add flexible meeting spaces to any office.

With a fixed perch height meeting table, and optional height adjustable stools, it becomes a great place for 1-to-1 catch ups with colleagues or focus working alongside colleagues.

### MEDIUM MEET (2 PERSON)

#### EXTERIOR

Width: 1607mm  
Depth: 1300mm  
Height: 2263mm

#### INTERIOR

Width: 1490mm  
Depth: 1141mm  
Height: 2027mm

#### TABLE

Height: 1150mm

**WEIGHT:** 560kg

**DB RATING:** up to 38.2dB

**INSTALL TIME:** under 2 hours

**CEILING CLEARANCE:** 250-300mm

#### STANDARD FEATURES

- LED lighting
- BusyPod occupation light
- Integrated power and USB port
- Air ventilation system
- PIR movement sensor
- Commercial grade carpet
- Stainless steel door baseplate
- Double seal door technology
- Interior acoustic PET felt panels
- Natural real wood veneer frame
- Fixed perch-height meeting table



#### OPTIONAL FEATURES

- Coat hanger in matching veneer
- Integrated data port
- Switch privacy glass
- Automatic door closer
- Touch control panel
- Wireless charger within desk
- Solid back instead of glass
- Fire warning and sprinkler system
- Additional socket for screen
- Manifestations and exterior signage
- Height adjustable stools

+44 (0)20 3904 6688

[london@work-agile.com](mailto:london@work-agile.com)

[work-agile.com](https://work-agile.com)



# BusyPod Large

Optional wall mounted screen for built-in video conferencing, the easy to install BusyPod Large 4 person meeting room is a perfect solution to create more private meeting spaces within open plan office environments.

## LARGE (2-4 PERSON)

### EXTERIOR

Width: 2107mm  
Depth: 1300mm  
Height: 2263mm

### INTERIOR

Width: 1990mm  
Depth: 1141mm  
Height: 2027mm

### TABLE

Height: 750mm

**WEIGHT:** 680kg

**DB RATING:** up to 36.6dB

**INSTALL TIME:** under 2.5 hours

**CEILING CLEARANCE:** 250-300mm

### STANDARD FEATURES

- LED lighting
- BusyPod occupation light
- Integrated power and USB port
- Air ventilation system
- PIR movement sensor
- Commercial grade carpet
- Stainless steel door baseplate
- Double seal door technology
- Interior acoustic PET felt panels
- Natural real wood veneer frame
- Fixed meeting table



### OPTIONAL FEATURES

- Coat hanger in matching veneer
- Integrated data port
- Switch privacy glass
- Folding access ramp
- Automatic door closer
- Touch control panel
- Wireless charger within desk
- Solid back instead of glass
- Fire warning and sprinkler system
- Additional socket for screen
- Manifestations and exterior signage
- Height adjustable desk
- Wall mounted screen
- Set of sofa benches

+44 (0)20 3904 6688

[london@work-agile.com](mailto:london@work-agile.com)

[work-agile.com](http://work-agile.com)

# BusyPod Extra Large

The BusyPod Extra Large is the perfect solution when a larger meeting room or board room is required. Mount a screen for video conferencing, hold your regular team or board meeting, present or pitch to clients.



## XLARGE (4-6 PERSON)

### EXTERIOR

Width: 2623mm

Depth: 2800mm

Height: 2263mm

### INTERIOR

Width: 2485mm

Depth: 2641mm

Height: 2027mm

### TABLE

Height: 750mm

**WEIGHT:** 1430kg

**DB RATING:** up to 35dB

**INSTALL TIME:** under 3 hours

**CEILING CLEARANCE:** 250-300mm

### STANDARD FEATURES

- LED lighting
- BusyPod occupation light
- Integrated power and USB port
- Air ventilation system
- PIR movement sensor
- Commercial grade carpet
- Stainless steel door baseplate
- Double seal door technology
- Interior acoustic PET felt panels
- Natural real wood veneer frame
- Fixed meeting table



### OPTIONAL FEATURES

- Coat hanger in matching veneer
- Integrated data port
- Switch privacy glass
- Folding access ramp
- Automatic door closer
- Touch control panel
- Wireless charger within desk
- Solid back instead of glass
- Fire warning and sprinkler system
- Additional socket for screen
- Manifestations and exterior signage
- Height adjustable desk
- Wall mounted screen

+44 (0)20 3904 6688

[london@work-agile.com](mailto:london@work-agile.com)

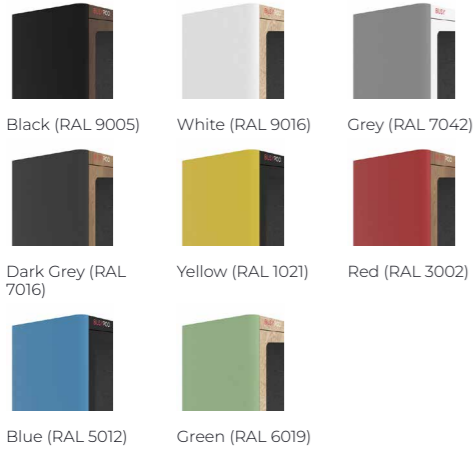
[work-agile.com](http://work-agile.com)



# Materials & colours

## Exterior side panel colours

### STANDARD



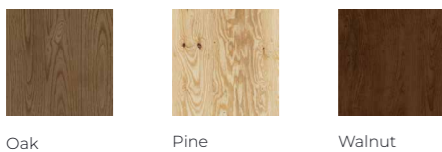
### CUSTOM



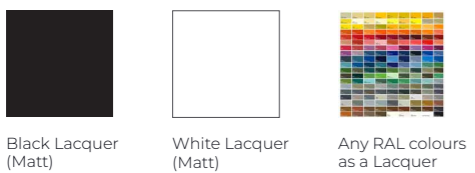
All RAL colours

## Window/Door frame & table materials

### STANDARD - REAL WOOD VENEERS



### CUSTOM

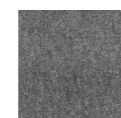


## Fabric Groups

Group 1	Group 2	Group 3
Rivet	Xtreme	Blazer
Phoneix	X2	Manila
Citadel	Era	Synergy
	Gravity	Valencia
	Advantage	Silvertex
Group 4	Group 5	Group 6
Silk	Main Line	Remix 3

## Interior walls PET felt

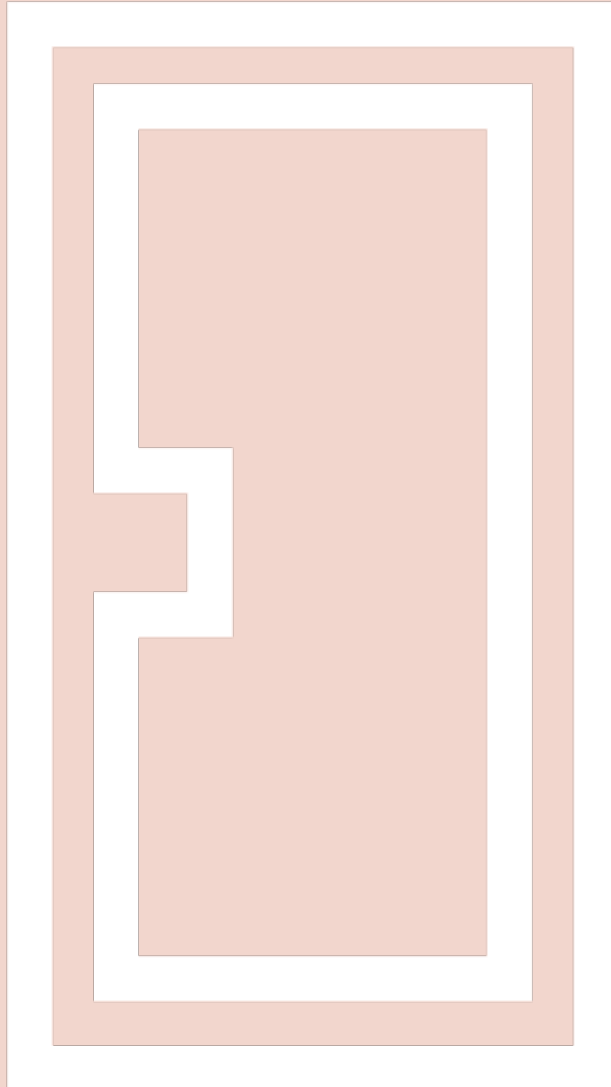
### STANDARD



Grey Felt

### CUSTOM



**UK Head Office**

Ground Floor, Westmead, Aylesford,  
Maidstone, Kent, ME206XJ

**London Showroom**

41 Pear Tree Street, Clerkenwell,  
London, EC1V 3AG

**Leeds Showroom**

Vitality House, Milford Place,  
Leeds, LS4 2BQ

**USA**

2149 Avon Industrial Dr,  
Rochester Hills, MI 48309

**France**

13 rue Louis Aragon, ZI La Vignasse,  
07800 La Voulte sur Rhône

**Germany**

Auf der Landeskronen 2,  
57234 Wilnsdorf